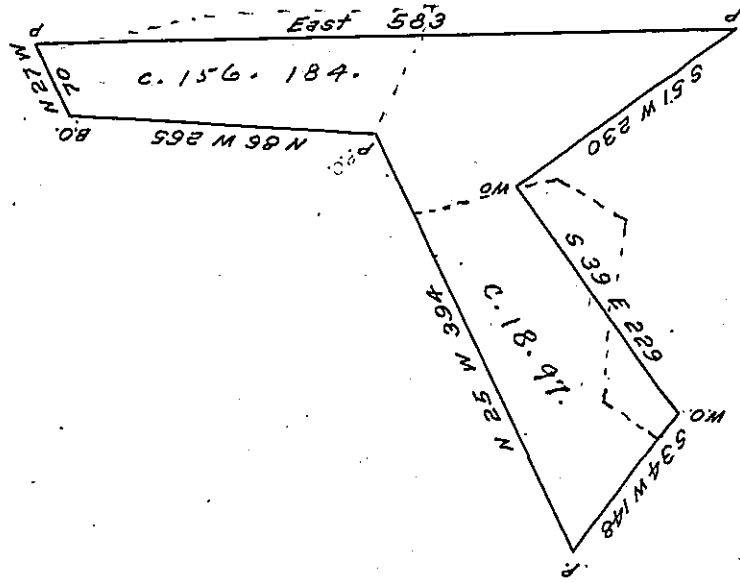


Griffith Evans



The above is the draught of a survey made April 5<sup>th</sup> 1795 in pursuance of a Warrant granted to Peter Ozeas — the 14<sup>th</sup> day of April 1792 Situate Northwest of the Ohio river on the Waters of Beaver Creek — adjoining land granted to Griffith Evans — called Chattellan — containing 402 Acres and 48 perches with the usual allowance of 6  $\frac{1}{2}$  Cent &c

Daniel Brodhead Esq S. G

Jno Hoge D. S

IN TESTIMONY that the above is a copy of the original remaining on file in the Department of Internal Affairs of Pennsylvania, made conformably to an Act of Assembly approved the 16th day of February, 1833, I have hereunto set my Hand and caused the Seal of said Department to be affixed at Harrisburg, this twenty-ninth day of September 1906.

*Isaac R. Brown*  
Secretary of Internal Affairs.